

Eardley Education Guidebook

Table of Contents

Who are we?

What is a Learning Coach?

What we Believe

Our Path to Student Success

Investigate

Communicate

Differentiate

Celebrate!



Who are we?

- We are experienced and passionate Learning Coaches.
- We are a team of educators serving schools, students, and families.
- We help students overcome their learning challenges.
- We serve students aged 5 to adults.
- We provide research-validated instruction that addresses the root of students' challenges.



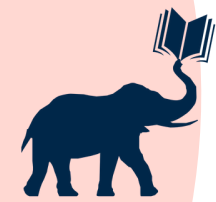
Nick Eardley
Founder and Director

[Go Back to Table of Contents Page](#)

Who do we serve?

- Students ages 5 to Adult
- Students with Diagnoses like:
 - Dyslexia
 - Autism Spectrum
 - ADHD
 - Dyscalculia
 - CAPD
 - Specific Learning Disability
- Struggling Students with no Diagnosis
- Students in challenging schools looking to advance.
- Homeschool Families needing reading support





What is a Learning Coach?

- A learning coach helps students develop skills and strategies to become more effective and independent learners.
- Learning coaches focus on the process of learning, helping students develop reading, language processing, study skills, test-taking, and general learning skills.



[Go Back to Table of Contents Page](#)

Why a Learning Coach vs a Tutor?

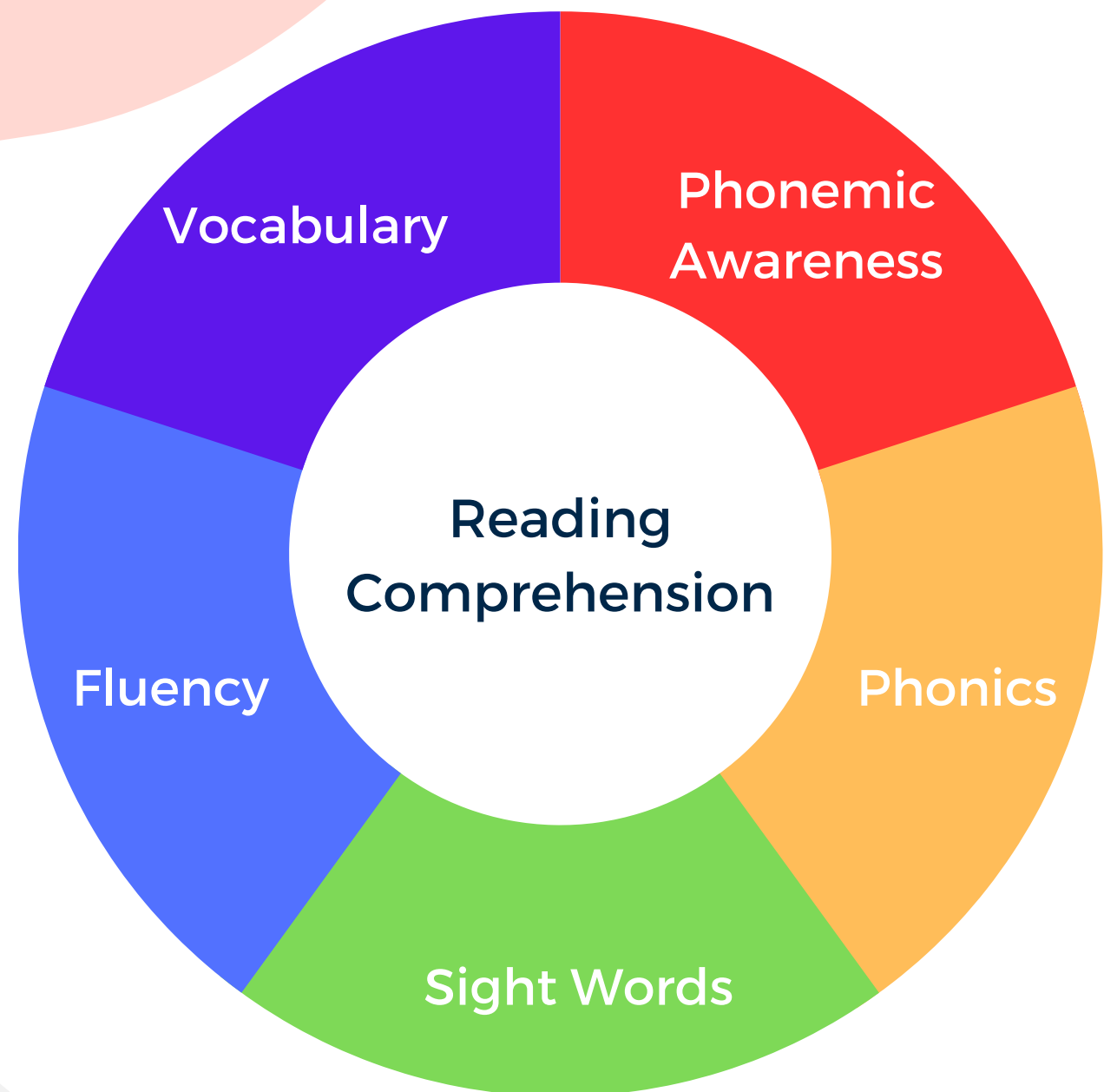
- Unlike regular tutoring, our Learning Coaches focus on creating independent learners with lifelong skills.
- Learning Coaches come in with specific goals each session and Socratically question students through self-discovery.
- Learning Coaches create lasting changes in the way students process information that will offer benefits long after their last lesson is completed.



What we believe

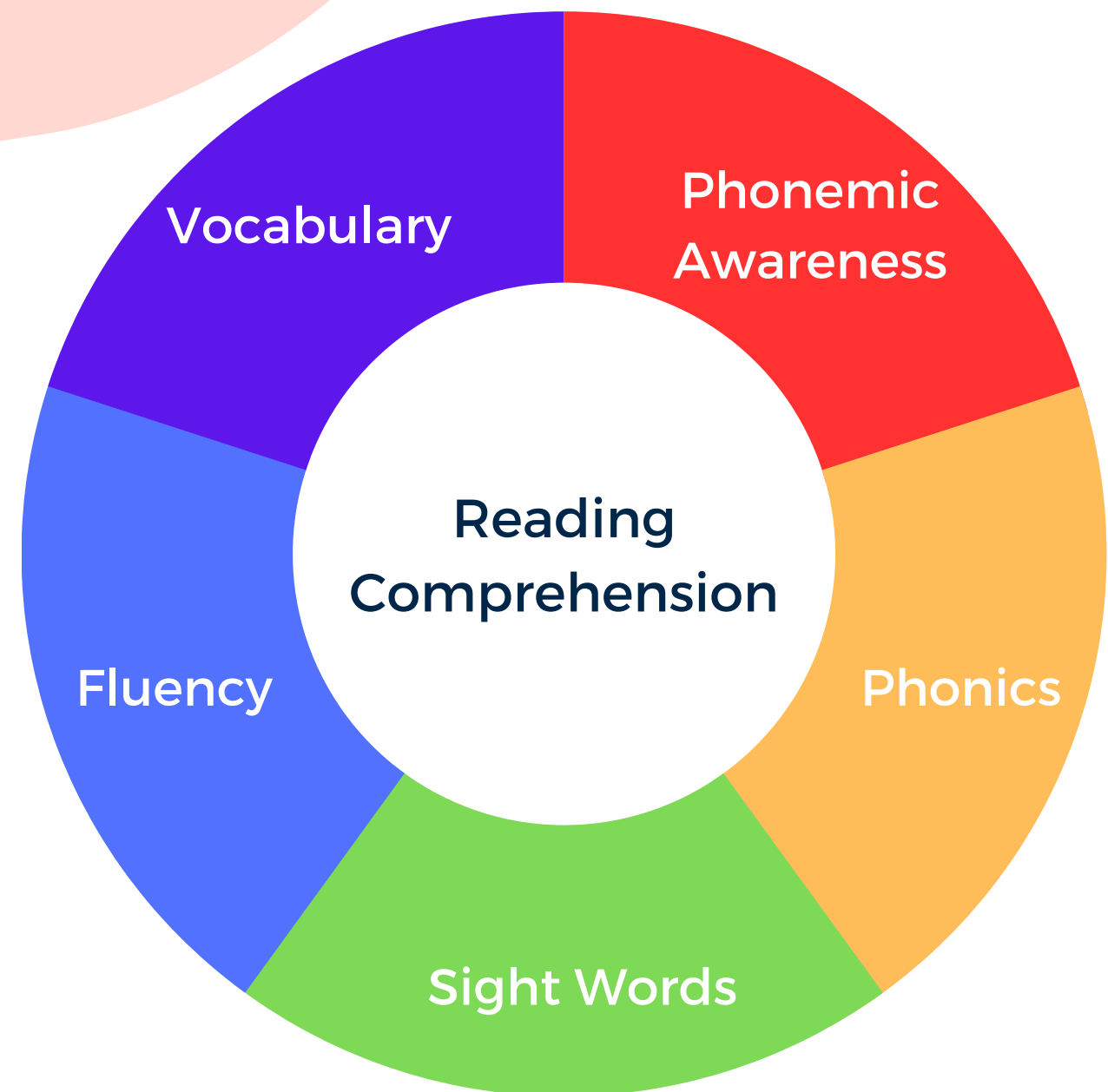
- We believe in the **Science of Reading**.
- We believe in **research-validated** methodologies.
- We believe in seeing the **whole student**, not just scores on paper.
- We believe in addressing **processing first**, not applying bandaids.
- We believe in meeting students at a level where **they can succeed**.
- We believe in teaching students how to **learn independently**.

The Science of Reading



- There are 6 critical components of reading that must be taught explicitly and systematically and are essential for developing strong reading skills.
- The 6 components are Phonemic Awareness, Phonics, Sight Words, Fluency, Vocabulary, and Reading Comprehension.
- Research has shown that these components are interdependent and that teaching them explicitly and systematically is essential for developing strong reading skills.

The Science of Reading



We test for and explicitly stimulate all 6 of the following areas:

- **Phonemic Awareness:** The ability to identify and manipulate the individual sounds in spoken words.
- **Phonics:** The understanding that letters represent sounds and that these sounds can be blended together to form words.
- **Sight Words:** Instant recognition of real words by their shape.
- **Fluency:** The ability to read quickly, accurately, and with expression.
- **Vocabulary:** The knowledge of words and their meanings.
- **Reading Comprehension:** The ability to understand text and make sense of what is being read.

Our Path to Student Success

Investigate

We collect information about your student using our **Learning Skills Assessment**, outside evaluations, parent interviews, and professional collaboration to build a crystal clear picture of their needs.

Communicate

We come equipped with answers to both why your student is struggling and how we can help them. We deliver a clear plan, length of intervention, and expected post instruction improvement.

Differentiate

We begin your student's customized plan and adapt daily as their skills improve and curriculum changes. Our **Learning Coaches** use their expertise to deliver lessons students actually enjoy while keeping them challenged.

Celebrate

We finally celebrate our student's growth and update their **Learning Skills Assessment** to measure progress and plan our next steps. Students are ready to begin applying their new skills to school with their **Learning Coach!**

[Go Back to Table of Contents Page](#)

Investigate

[Go Back to Table of Contents Page](#)

Learning Skills Assessment

Areas we assess:

- Phonemic Awareness
- Working Memory
- Concept Imagery
- Vocabulary
- Phonics
- Sight Words
- Spelling
- Reading Fluency
- Reading Comprehension
- Math
- Executive Functioning

Outside Evaluations



- Psycho-Educational Evaluations
- Speech and Language Evaluations
- Standardized Testing
- School Benchmarking and Grades

Professional Collaboration



- Parent Feedback Requested
- Teacher Feedback Requested
- Tutor Feedback Requested

Communicate

[Go Back to Table of Contents Page](#)

The Consultation

Scores

We will share scores comparing your student to others across the country based on their age and grade levels. Each domain is measured independently allowing us to create a map of strengths and weaknesses.

Programs

We recommend specific programs and research-validated methodologies based on your student's unique learning profile. Each program will be tailored to their profile, and no two students' instruction is identical.

Frequency

We will recommend a specific frequency of instruction to address the gaps found in our Investigation phase. We must move quickly enough to outpace the clock and close gaps fast! Intensity is a huge driver of success for our students.

Next Steps

We have our plan outlined, and the next steps are logistics. Our Business Operations Manager will join us to help turn our goal into reality. Students are scheduled for in-person or virtual instruction at home, school, or the library.

Differentiate

[Go Back to Table of Contents Page](#)

Instruction - Phase 1

Pacing

We are constantly adjusting each student's intervention plan to adapt to their ever-increasing rate of learning.

We keep students in the **Zone of Proximal Development** so they are consistently challenged but successful enough to supercharge their growth.

Fun!

Our instruction is carefully designed to be both informative and fun!

Students **learn faster, retain more, and get excited** about learning when they have fun! It's not just fun, it's Science, and our **Learning Coaches** create the right environment for students to thrive.

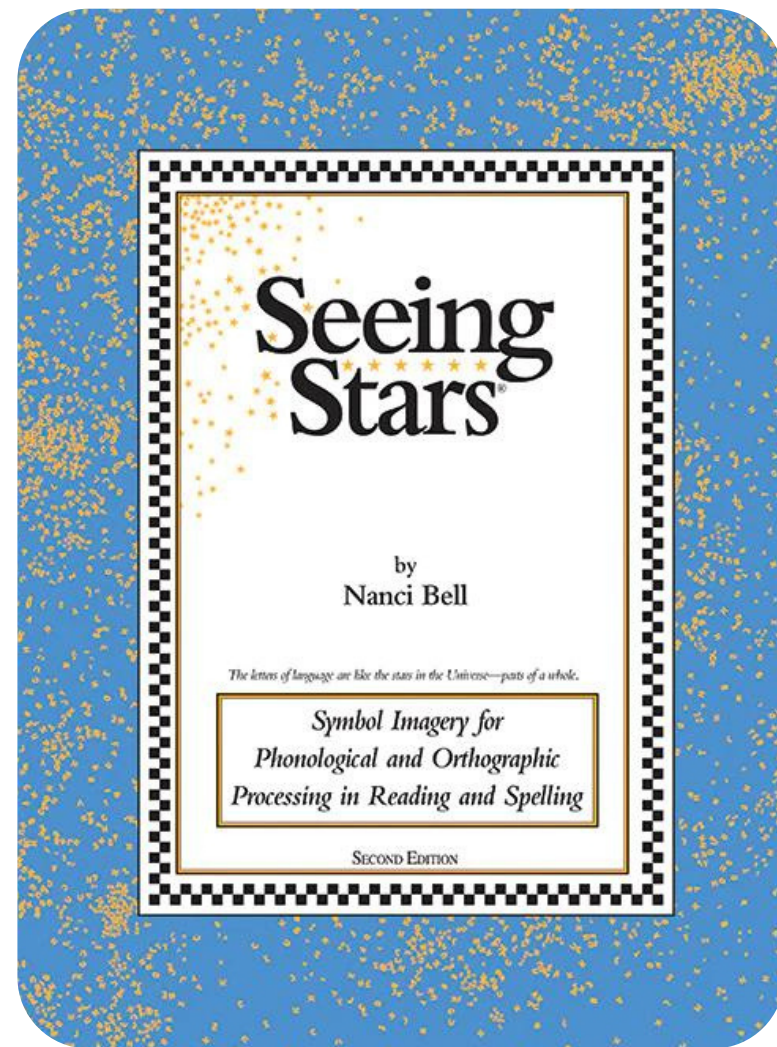
Curriculum

Lesson plans are **adjusted constantly** to meet the student's next goal. We used systematic instruction to **catch missing skills** from prior grades while focusing on building their processing skills for **independent learning**. When students reach mastery, it's on to the next one.

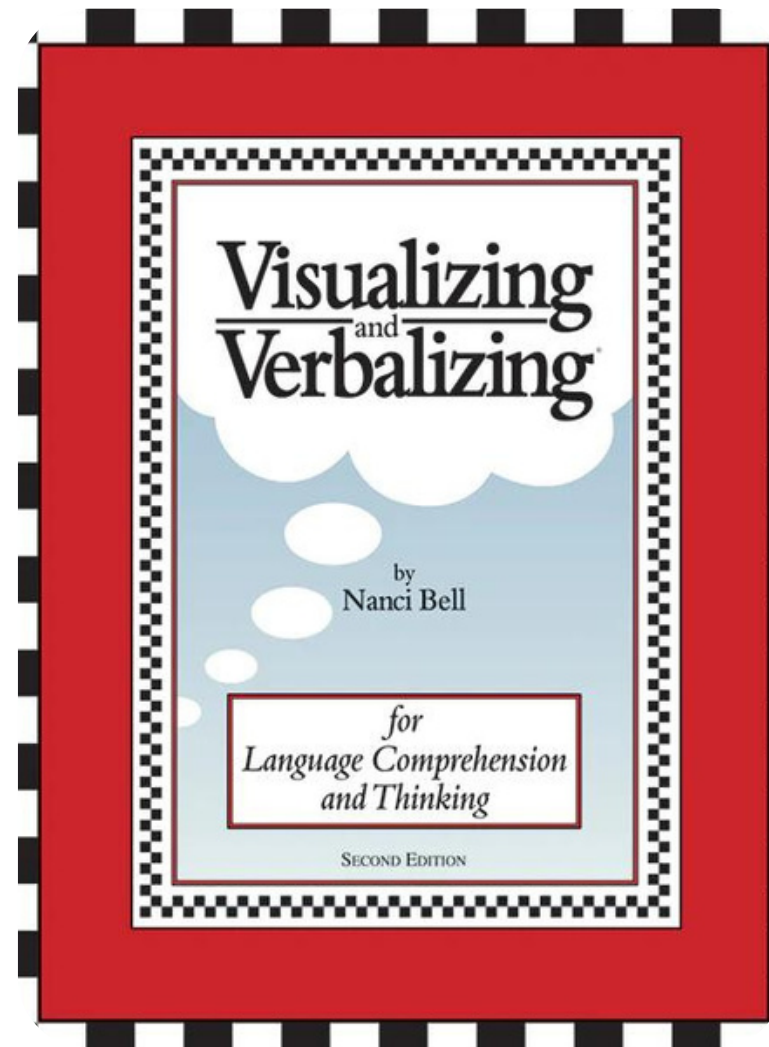
Progress Monitoring

Parents are encouraged and required to **attend progress updates** and observations to discuss progress, goals, and student outcomes with transparency. We track progress toward mastery using both **formative and summative assessments**.

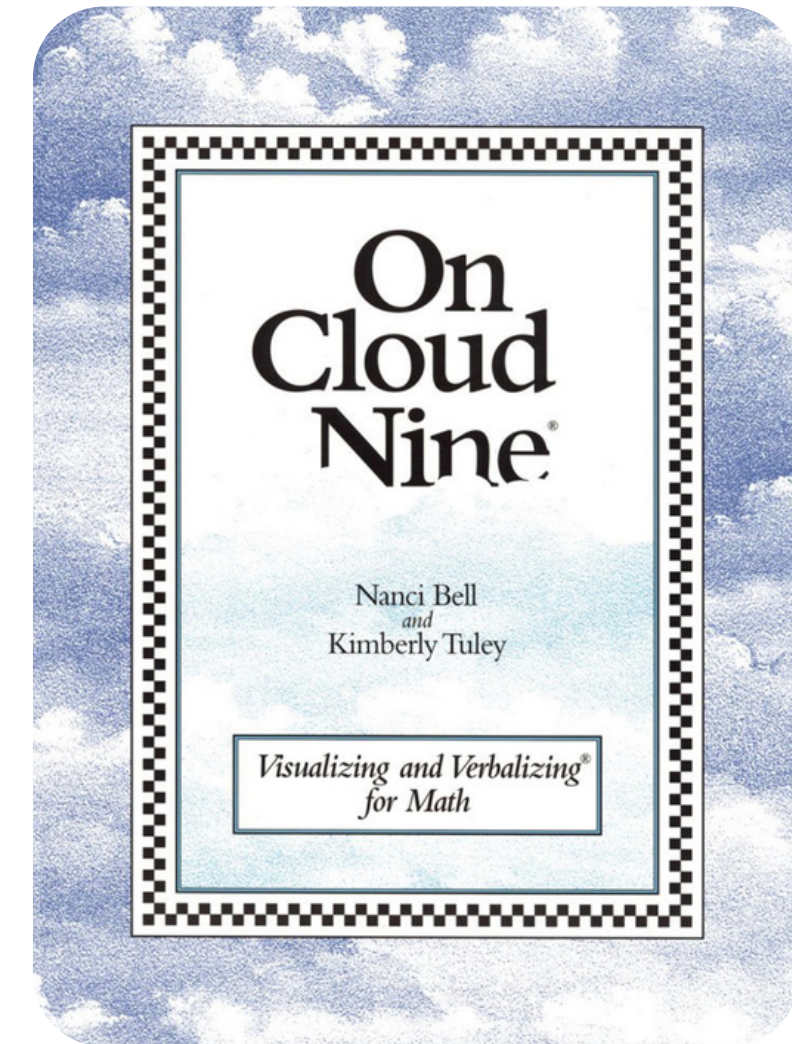
Programs Offered



Seeing Stars®

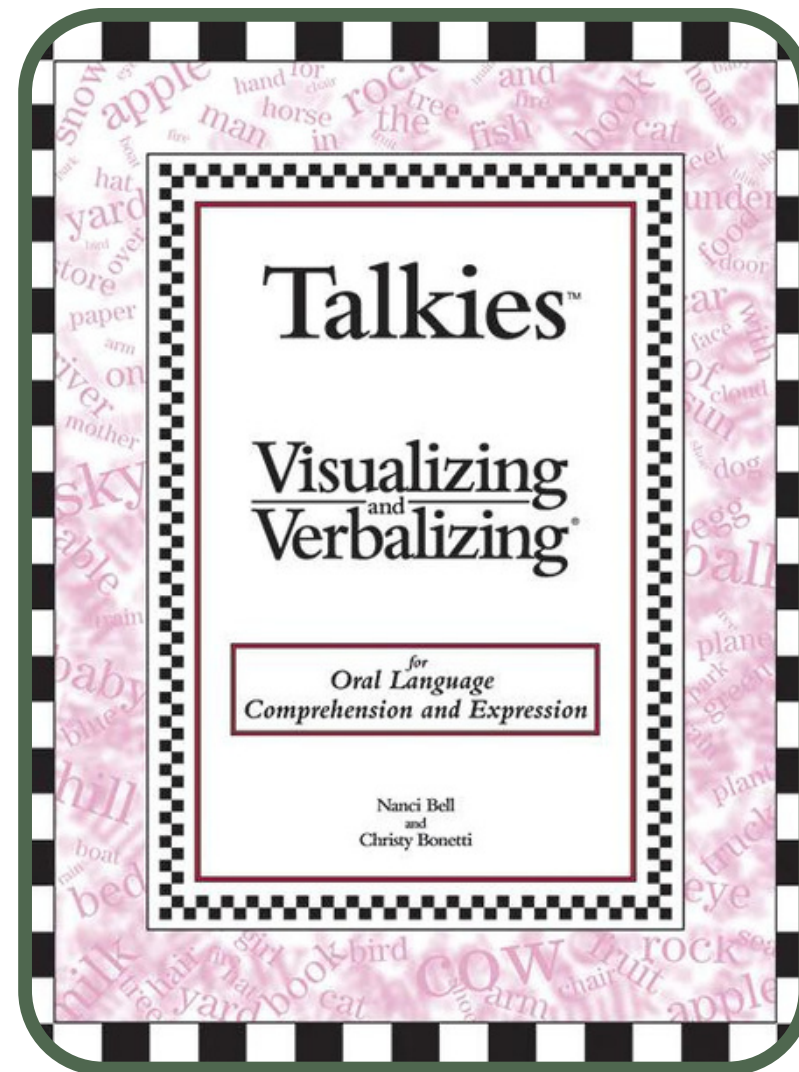


Visualizing &
Verbalizing®

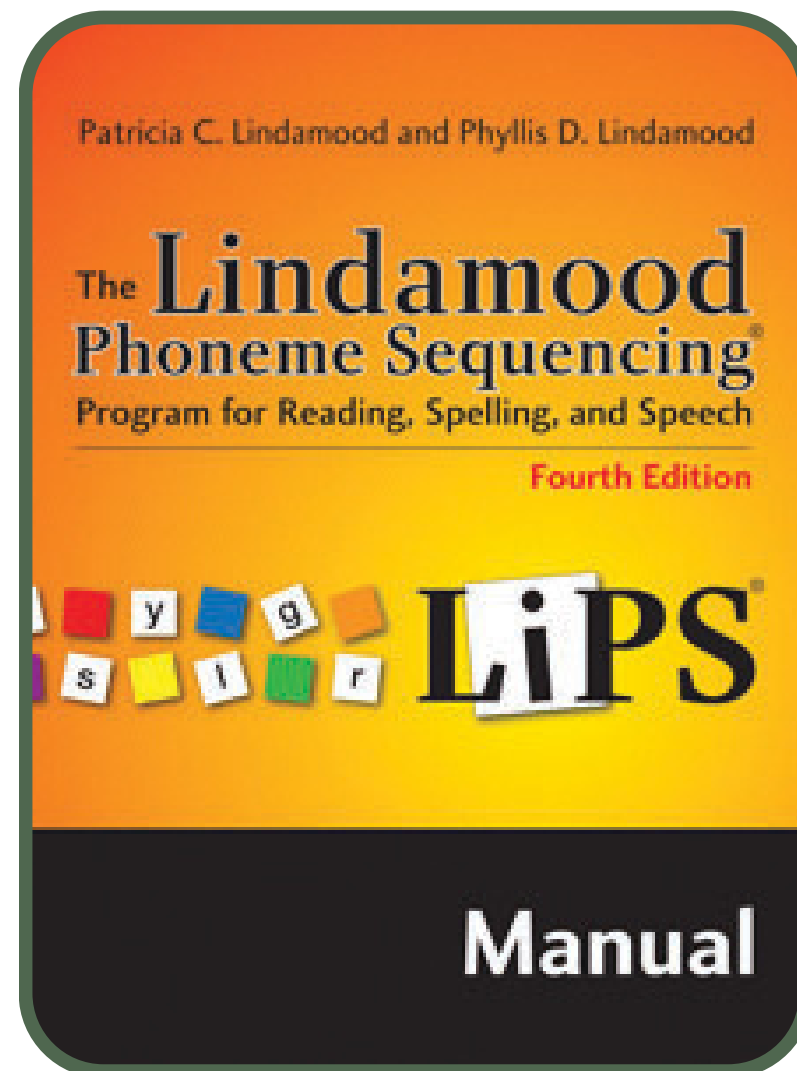


On Cloud
Nine® Math

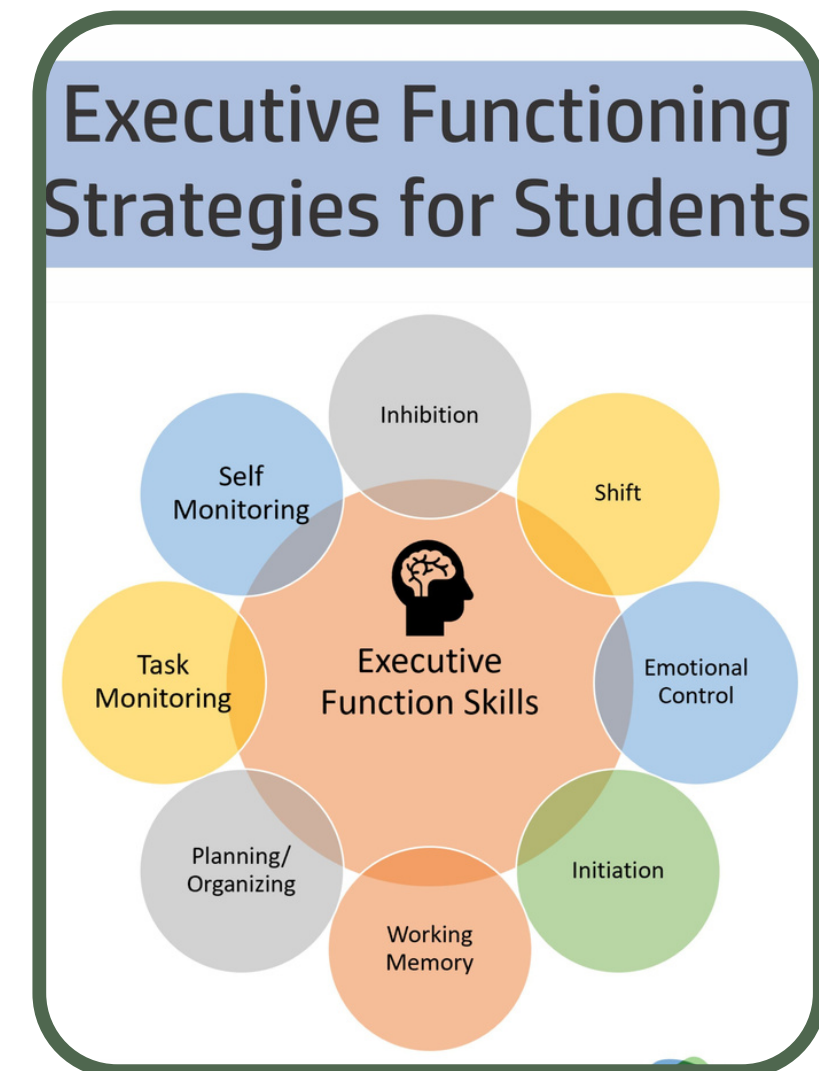
Programs Offered



Talkies®



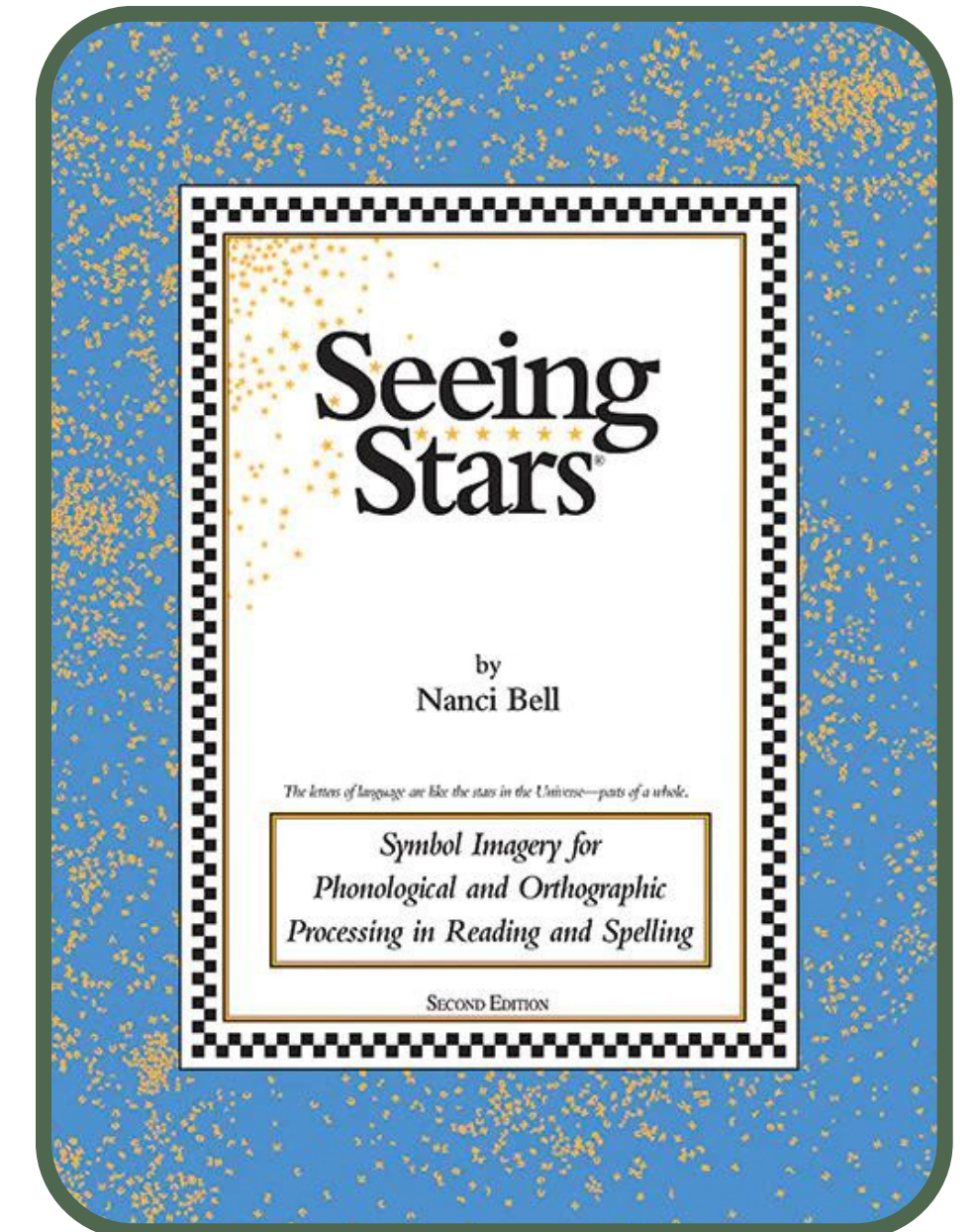
The LiPS®
Program



Executive
Functioning

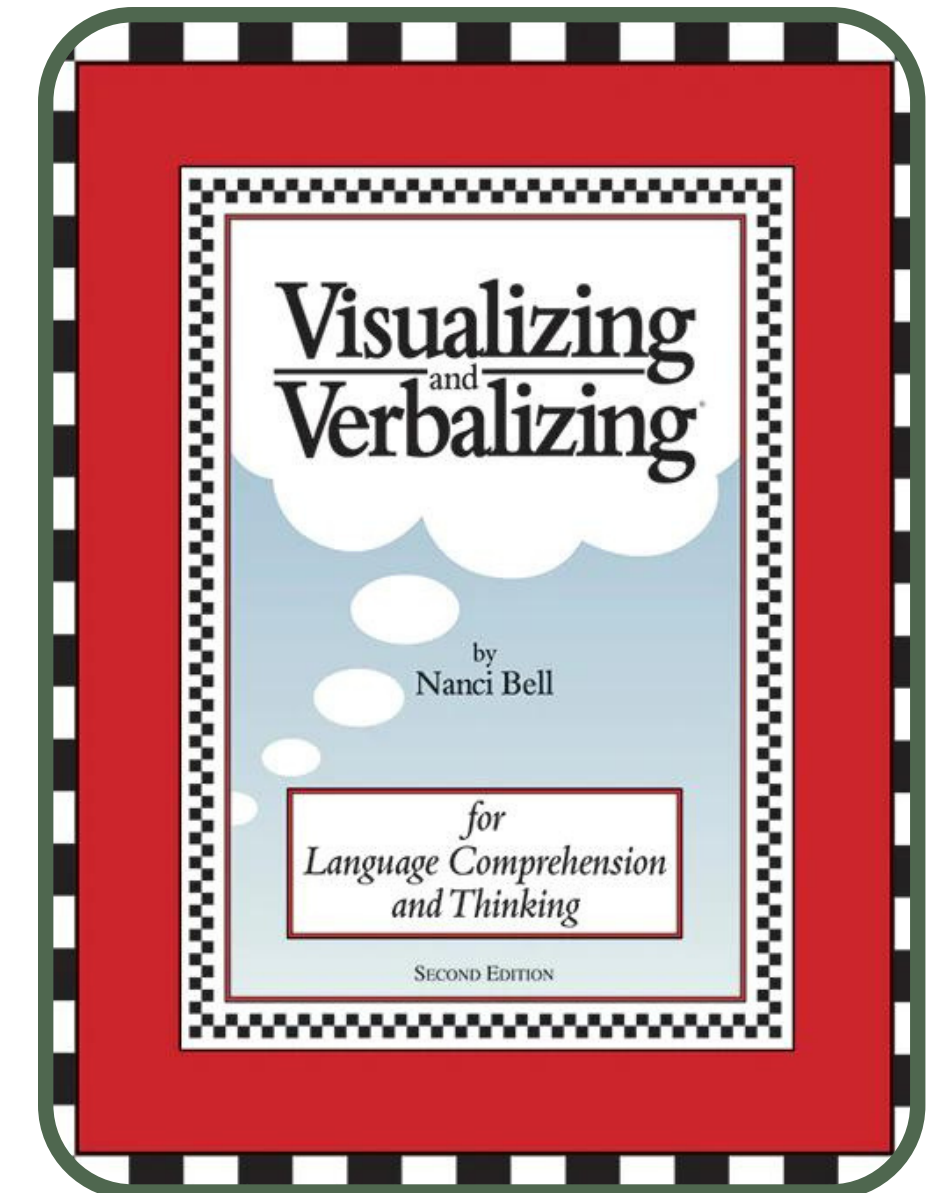
The Seeing Stars® Program

- Ideal for students struggling with:
 - Phonics
 - Sight Words
 - Reading
 - Spelling
- Fast and lasting improvements
- Multisensory, systematic instruction designed for Dyslexia
- Aligns with the Science of Reading.



The Visualizing & Verbalizing® Program

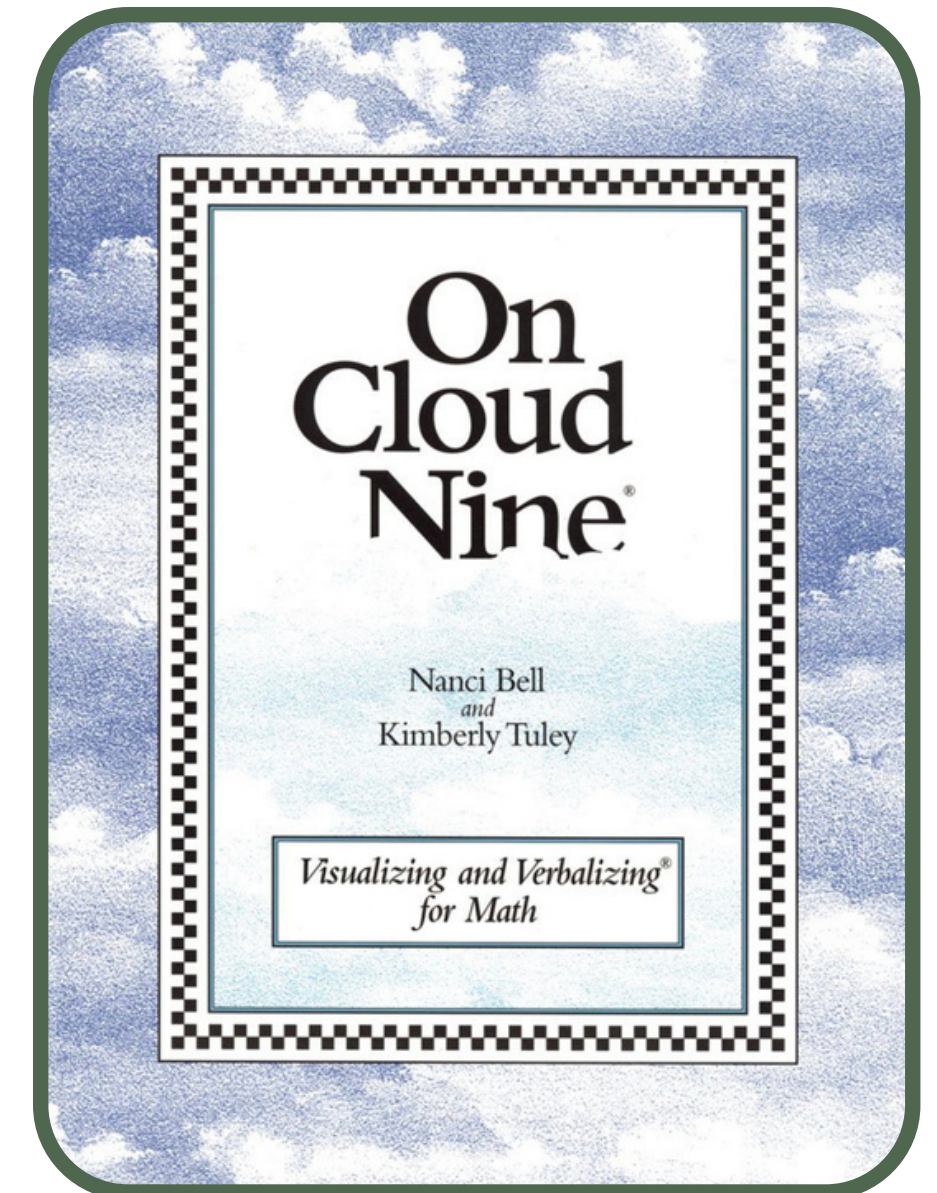
- Ideal for students struggling with:
 - Reading Comprehension
 - Vocabulary
 - Written and Oral Expression
 - Executive Functioning
 - ADHD
- Research validated with fMRI studies.
- Lifelong processing changes.
- Aligns with the Science of Reading.



[Go Back to Our Programs Page](#)

The On Cloud Nine® Math Program

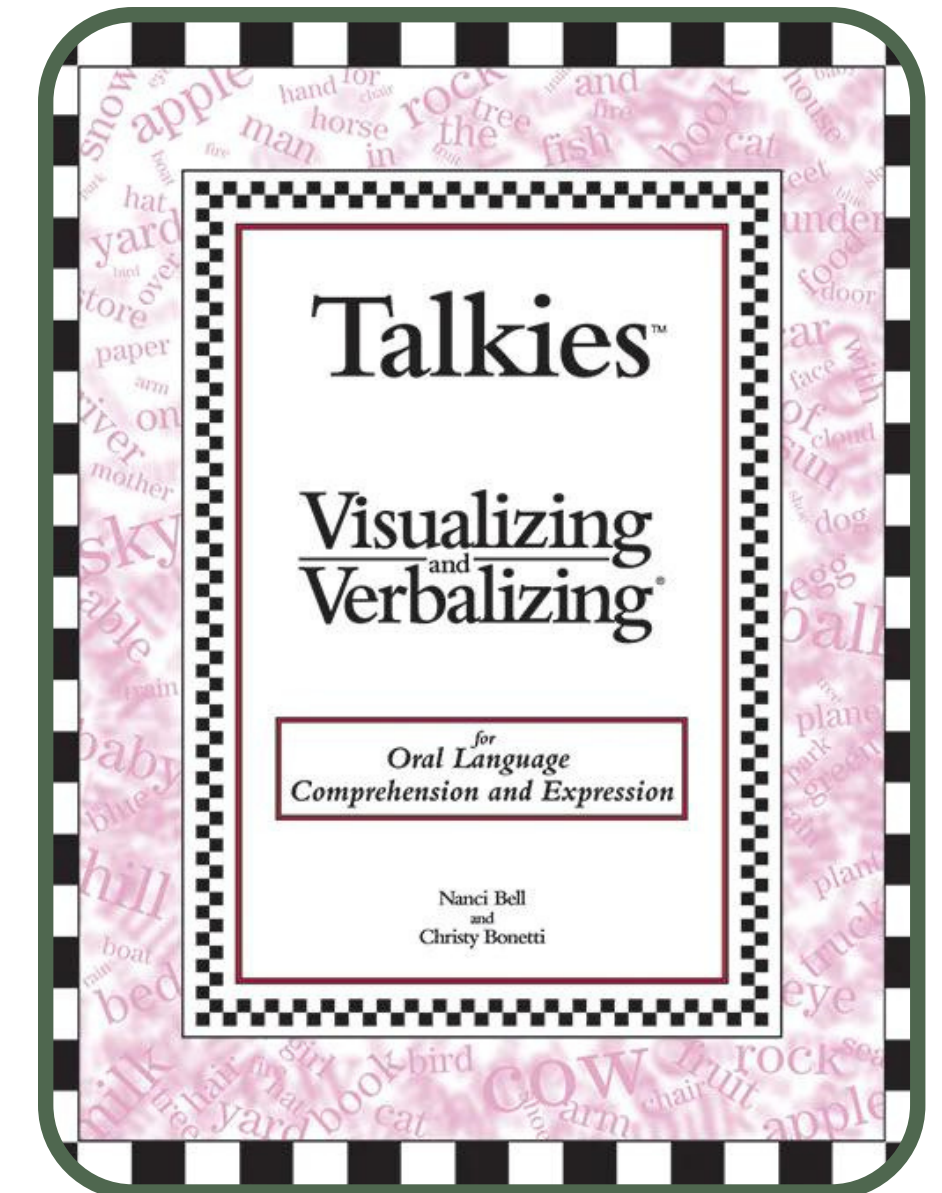
- Ideal for students struggling with:
 - Math Facts
 - Math Vocabulary
 - Word Problems
 - Division
 - Fractions
- Multisensory instruction for dyscalculia
- Instruction builds basic number sense
- Students gain accuracy and automaticity



[Go Back to Our Programs Page](#)

The Talkies® Program

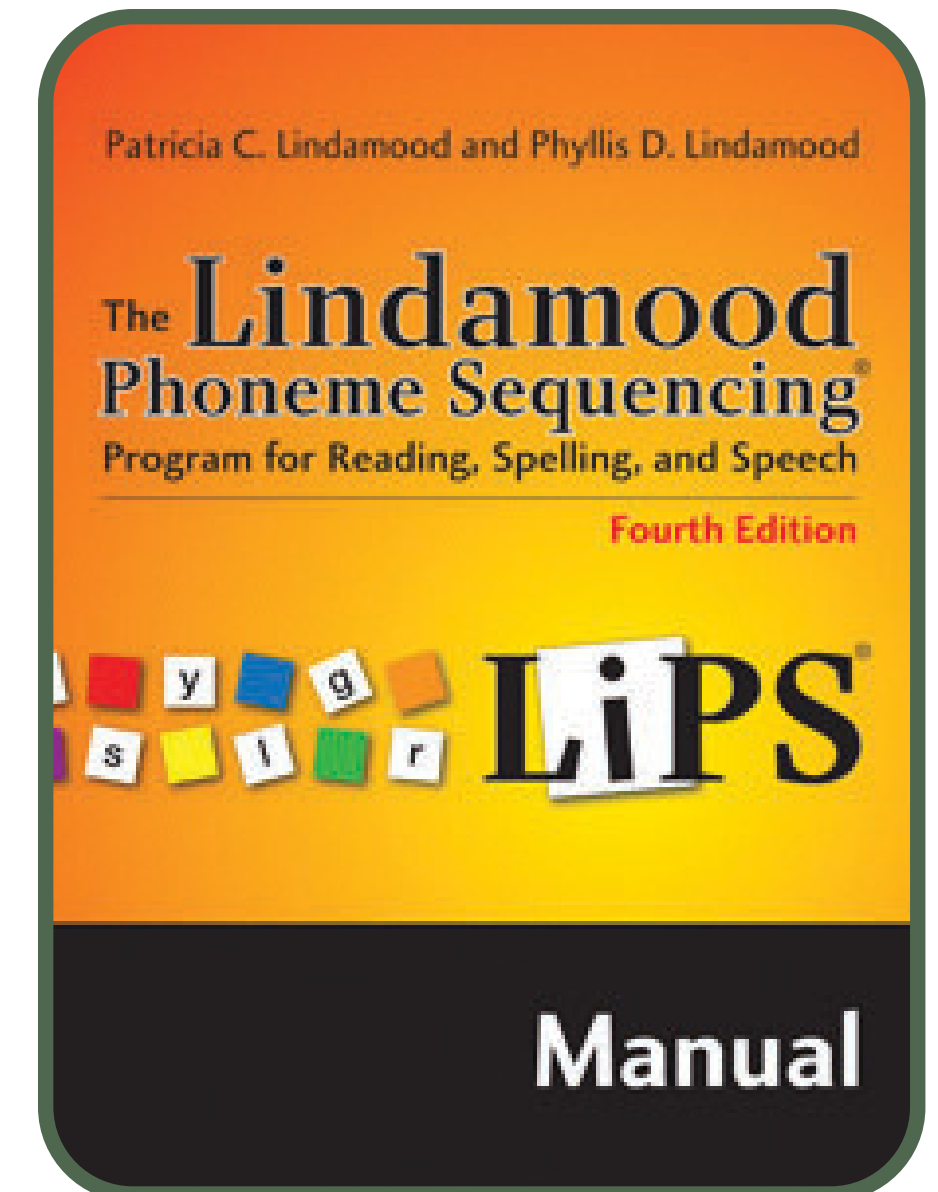
- Ideal for students struggling with:
 - Verbal Communication
 - Non-Verbal Communication
 - Completing Full Sentences
 - Following Directions
 - ESL
- Primer to the V/V® Program
- Focuses on mastery of basic communication skills



[Go Back to Our Programs Page](#)

The Lindamood Phoneme Sequencing® Program

- Ideal for students struggling with:
 - Phoneme Awareness
 - Phonics
 - Spelling
 - Hearing Impairment
 - Reading Fluency
- Multisensory instruction for dyslexia
- Oral-motor feedback provides additional sensory anchors

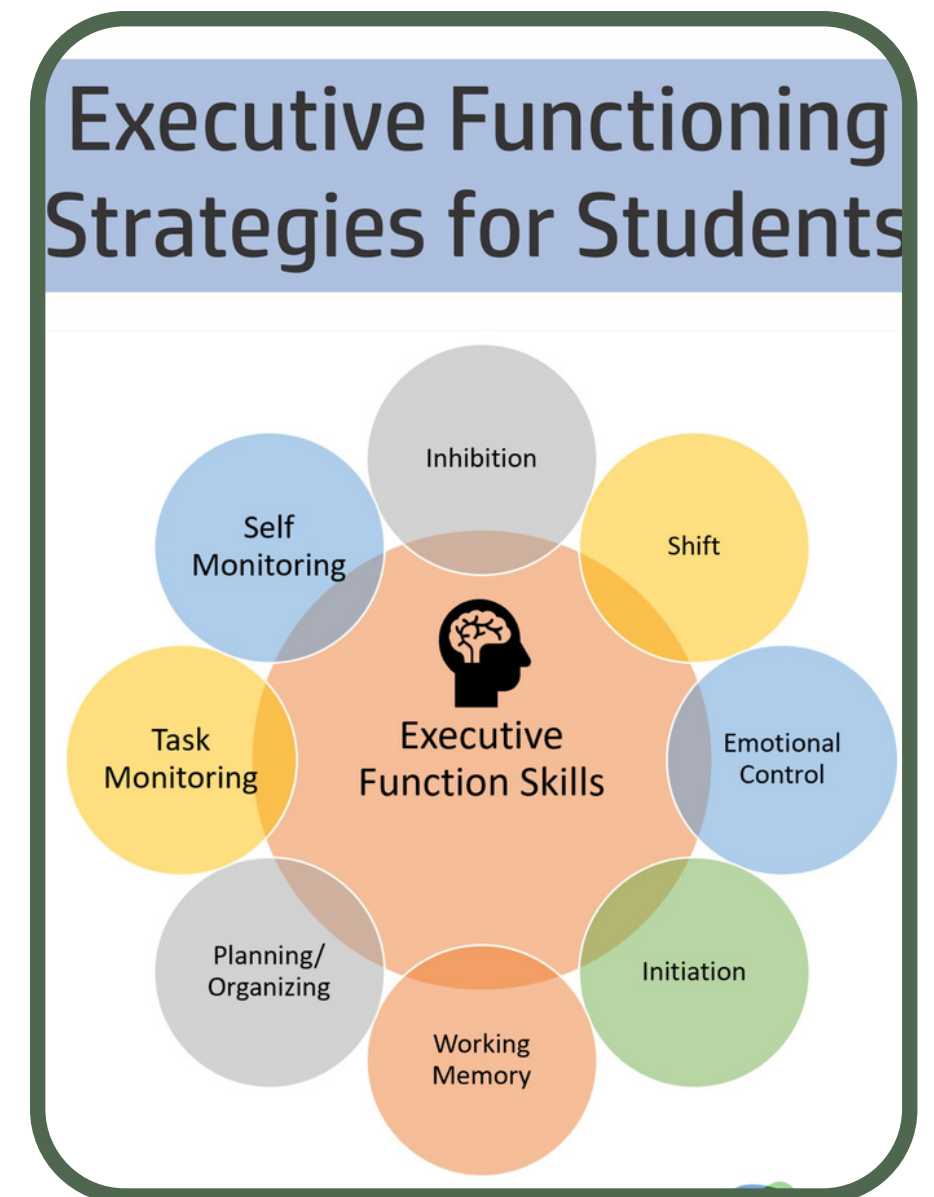


[Go Back to Our Programs Page](#)

Executive Functioning Programs

- Ideal for students struggling with:
 - Organization
 - Time Management
 - Study Skills
 - Working Memory
 - Test Taking Skills
- 12 week programs with variable support
- Focuses on building lasting habits and routines.

[Go Back to Our Programs Page](#)



Celebrate!

[Go Back to Table of Contents Page](#)

Hard Work Pays Off

- We celebrate our student's growth and **update their Learning Skills Assessment** to measure progress and plan our next steps.
- Our students are now ready to shift from their intensive remediation to a less intensive **school application phase**.
- Students begin applying their new abilities to school with their **Learning Coach!** We help them connect the dots and ensure these skills are available in all environments.

Instruction - Phase 2

Communication

We will share pre- and post-assessment results showcasing your student's **newfound skills** that will show us what skills are ready for application and which, if any, need continued focus. We are happy to share results with all stakeholders upon request.

Accommodation

We will work with you and your student's schools to help plan any accommodations that might be helpful based on our assessments and experience. We strive for **common-sense solutions** that **safeguard student achievement**.

Application

Your student's **Learning Coach** will guide them through applying their new **Literacy, Language, or Math skills** to their current curriculum. This step is **crucial** because it ensures the student bridges the space between theory and practice.

Reduced Support

As your student receives **hands-on experience** applying their **new skills in the classroom**, they will need less and less support. Expect the frequency of instruction to drop each quarter as the year goes on until they don't need our help.

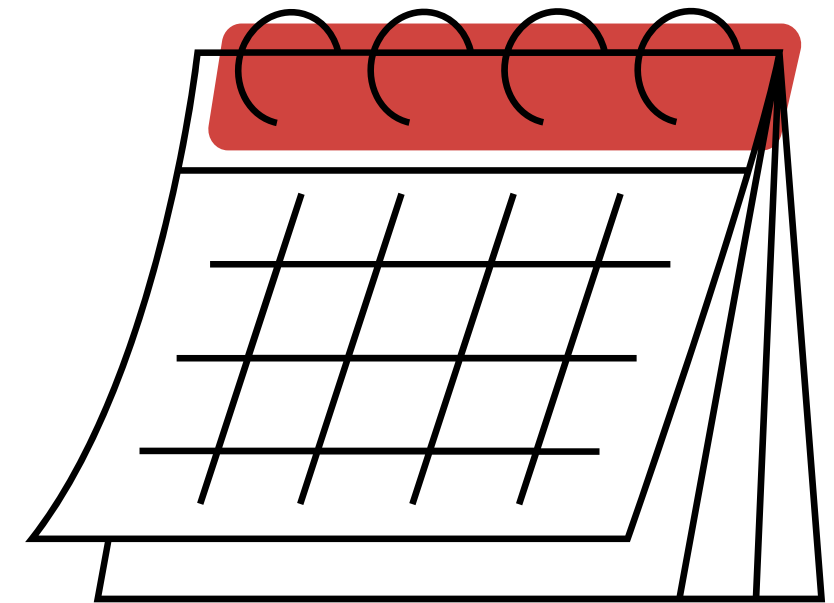
Excited to learn more?



Check out our Website!

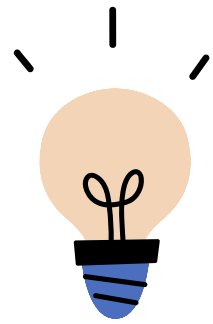


Explore our Instagram!



Schedule a call to
learn more!

Ready to chart a new path forward? We are.



[Click Here to Schedule a
Learning Skills Assessment](#)

